

# EXPLORER 540

Dual Mode BGAN M2M & Cellular terminal

February 2017 Product Sheet

The most important thing we build is trust

# COBHAM

 **Remote Satellite Systems**  
INTERNATIONAL

## Introducing the EXPLORER 540

As the world's first BGAN M2M terminal designed to operate on both Inmarsat BGAN (Broadband Global Area Network) and cellular 2G/3G/LTE networks, EXPLORER 540 delivers always available connectivity for critical monitoring and control applications.

The BGAN M2M service uses Inmarsat BGAN to provide a reliable, global, two-way IP data service. It is designed to connect monitoring and control applications in remote, unmanned locations, providing visibility and management of those assets. By combining BGAN M2M with cellular connectivity in the same terminal, EXPLORER 540 gives users the opportunity to choose the best carrier for any location.

## Dual Mode BGAN M2M

EXPLORER 540 is the only Inmarsat BGAN M2M terminal to offer dual mode operation, which provides unique flexibility and M2M data communication cost-control, as it ensures the most cost-effective communication service can be chosen depending on location.

Securing continuity of M2M IP data transfer, which often originates in hard to reach, remote locations, dual-mode operation delivers significant failover capabilities with automatic switching between BGAN and cellular networks.

For organisations transferring critical real-time data within their M2M networks, EXPLORER 540's dual mode can provide unmatched service availability. The terminal is well suited for bespoke M2M solutions such as IP SCADA for data backhaul, asset tracking, real-time surveillance and remote telemetry.

## Designed for any environment

EXPLORER 540 is a rugged M2M terminal designed to provide reliable and secure IP data in even the harshest environments. At 20 x 20 cm and just 1.6 kg, it is the smallest and lightest BGAN M2M terminal in the market today.

The durable casing and a dust and water resistant IP66 design makes EXPLORER 540 the perfect choice for any kind of fixed installation outside or inside.



## System features

- EXPLORER 540 is BGAN M2M certified and BGAN Class 2 Type Approved for services such as BGAN Link
- Lightweight and rugged IP66 design ensures durability for outside mounting - no enclosure needed
- Polemount included in the package
- Simple to set up and operate
- Versatile power options with both Power over Ethernet (PoE) and 10-32VDC input
- Two cable glands for easy installation of standard power and Ethernet cables into the back housing
- Remote management of the terminal via SMS including configuration, debugging, and access to the web interface
- The optional cellular 2G/3G/LTE Modem is an integrated part of the design (expected availability in Q2 2017)
- Automatic failover between BGAN and the cellular network ensures continuous connectivity.

### Did you know that Inmarsat BGAN M2M...

- ...has no connection charge
- ...offers free over-the-air software upgrades
- ...has a 99.9% availability over the BGAN network

*Subject to change without further notice*

[www.cobham.com/satcom](http://www.cobham.com/satcom)

# EXPLORER 540

Dual Mode BGAN M2M & Cellular terminal



## Specifications

### Dimensions

Total H / W / D: 202 / 202 / 51.8 mm  
8.0 / 8.0 / 2.0 inches

**Weight (incl. battery):** 1.6kg / 3.5lbs (excl. cellular modem)

### Data capabilities

Standard IP: Up to 464 kbps  
Streaming IP: 32, 64, 128 kbps (Not for BGAN M2M)

### Voice capabilities (Not for BGAN M2M)

Standard voice: 4 kbps  
Premium voice: 3.1 kHz audio, 64 kbps

**EIRP:** 15.1 dBW ±1dB

**User interface:** One LED (Status), 1 Reset Button, web interface

**Languages:** ENG, FR, DE, ES, RU, JP and CN

**Approvals:** CE, FCC, IC, C-TICK, Inmarsat Class 2 Type Approved and BGAN M2M Certified

## Environmental conditions

### Temperature

Operational (ambient): -40°C to +55°C / -40°F to +131°F  
Extended Operational: > +55°C / +131°F  
- Protective power off if internal overheating occurs - typically at +75°C / +167°F  
Storage: -55°C to +80°C / -67°F to +176°F

**Relative humidity:** 95% non-condensing at +40°C/+104°F

**Robustness:** 0.5 m/1.64 ft drop on concrete (operational, 95% survival)

**Water and dust:** IP-66 Compliant

## Power

**DC input range:** 10.5-32VDC Pin Connector

**PoE input:** Poe+ IEEE 802.3at Type 2 Class 4 via RJ45 Connector

**Power consumption:** Standby: 1.9W (@ 12VDC)  
3.5W (PoE)  
Transmit: 19W (typical)  
Power Save:

	@12VDC	PoE
Wake on GPIO or timer	0.1W	2.4W
Wake on LAN	0.9W	2.3W

## Interfaces

- 1 x Micro USB interface (Proprietary for external EXPLORER cellular Modem)
- 1 x BGAN SIM-Card slot
- 1 x RJ45 Ethernet interface with PoE
- 1 x 8 pin Ethernet interface
- 1 x 3 pin for I/O
- 1 x 2 pin for DC power input

## Package

- EXPLORER 540 terminal
- Polemount
- Quick Start Guide
- Multi-language webserver (ENG, FR, DE, ES, RU, JP and CN)
- 2 Cable Glands and 1 Blanking Plug
- Security torx bit for back cover
- Allen key for polemount

## Accessories

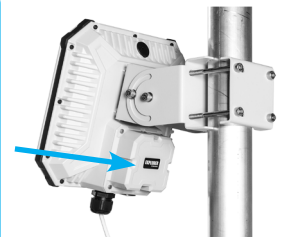
- EXPLORER LTE USB Modem for EXPLORER 540 (expected to be available in Q2 2017)

## Product number

403715A-00500 EXPLORER 540 Terminal

### EXPLORER cellular Modem

The optional EXPLORER cellular Modem replaces the backcover of the EXPLORER 540 and fits the interface enclosure. With the modem you can connect to local cellular networks and turn EXPLORER 540 into a dual mode BGAN M2M.



**Remote Satellite Systems**  
INTERNATIONAL

**TOLL FREE 1-888-989-8199**

1455 N. Dutton Suite A, Santa Rosa, CA 95401  
FAX 707-546-8198 • info@remotesatellite.com  
www.remotesatellite.com

Subject to change without further notice

[www.cobham.com/satcom](http://www.cobham.com/satcom)