



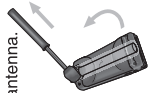
----- Represents functions not on front of phone.

HELPFUL HINTS

- Need clear view of sky, outdoors, away from buildings and tall structures. Rotate and fully extend antenna into a vertical position.
- Wait until registration is complete (you will see Registered and the and indicators). If no registration (missing), press .
- To dial, press: [] or [and hold for two seconds], [country code], [phone number], .
- Talk with antenna above your head and vertical to the ground.

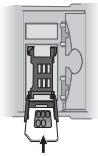
Getting Started

1. Rotate and extend the antenna.

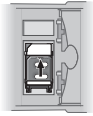


(Top)

3. Insert the SIM card.



4. Push down and slide the SIM card tray to the right.



5. Attach battery door cover.



(Top)

2. Remove battery door.



(Top)

7. Attach charging device.



9505A PORTABLE QUICK REFERENCE

Basic Operation

Turn the phone's power on/off: Press and hold **ON/OFF**.

Place a call: You need a clear view of the sky, away from tall structures. Rotate and extend the antenna in a vertical position. To dial, press: (**0-9**) or (*****) or (**#**) and hold for two seconds, [country code], [phone number], **CALL**.



Answer a call (with antenna rotated and extended):

Phone rings and/or vibrates.

After **CALL** followed by **RECEIVER?** is in display, press **CALL**.

Answer a call (with antenna stowed):

Phone chirps.

Rotate and extend antenna.

Phone will ring and/or vibrate.

After **CALL** followed by **RECEIVER?** is in display, press **CALL**.

End a call: Press **END**.

Special Features

Adjust earpiece volume:

Press upper and lower volume keys on the side of the phone.

Adjust ringer volume:

Press **UP** and then the upper and lower volume keys on the side of the phone.

Clear the last digit in the display or exit a submenu:

Press **DEL**.

Clear the entire display or exit the menu system:

Press and hold **DEL**.

Select prompt language:

Press and hold **DEL** to return to idle display.

Press **DEL**, **2**, **6**, **6** to go to the language selection submenu.

Press **DEL** until you see the preferred language.

Press **DEL** to select.

Special Features Continued

Keypad disable:

Press ***** and **#** keys simultaneously to prevent accidental usage of the phone. All keys with the exception of the **ON/OFF** key will be disabled. You can still answer an incoming call by pressing **CALL** when the keypad is locked. To remove the keypad disable, press ***** and **#** simultaneously.

Quick Access Menu

Factory default for satellite mode.

1. Find Name
2. Mute
3. Call Voicemail
4. Battery Meter
5. Lock Now
6. Vibrate On/Off
7. Read Messages
8. Register Now
9. Forward On/Off

Phone Book

Recall a number from the phone book:

1. Press **CALL**.
2. Enter the one-, two-, or three-digit location number of the entry, and then press **CALL**.
3. Press **CALL** to call the displayed entry.

Recall last ten numbers dialed:

1. Press **CALL** until you see Phone Book, and then press **CALL**.
2. Press **CALL** to scroll to Last Ten Calls, and then press **CALL** to select.
3. Press **CALL** to scroll to Last Calls Made and then press **CALL** to select.
4. Press **CALL** to scroll to the number you are looking for.
5. Press **CALL** to place a call to that number.