



Land Solutions

Sea Solutions

Air Solutions



# SatDOCK

## 9555SD-G



Handsfree



Bluetooth



GPS



Tracking



Alert



USB Data



# BEAM

# iridium SatDOCK

## 9555SD-G

- ▶ **Handsfree**
- ▶ **Fully Integrated Communications**
- ▶ **Global Coverage**



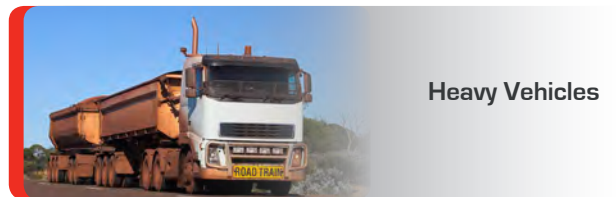
Beam SatDOCK In-vehicle hands-free docking station provides a high quality semi-permanent installation for the Iridium 9555 handset. The docking station has inbuilt echo cancelling and full duplex technologies to provide superior voice quality and professional handsfree or privacy calls for various transport application.

The SatDOCK supports Tracking & Alert functionality via the dedicated in built GPS engine. Tracking messages can be pre configured to support periodic reporting, manual position report update via button press, remote polling or the sending of an emergency alert messages all via SMS / SMS to email or SBD (Short Burst Data )

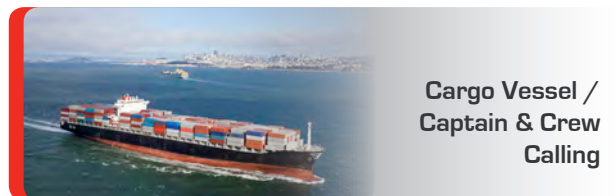
The Iridium 9555 satellite handset, fits securely in the Dock which is compact in design, unlike other traditional docking kits that require another external box for installation, the Beam SatDOCK is all contained within the one single compact Dock. Other features include phone charging, in-built Bluetooth, USB data, inbuilt ringer and allows antenna and power to be permanently connected to the Dock ready for use. The Iridium 9555 handset is easily inserted and removed by the press of a button on the top of the dock making it very easy to use away from the Dock when required.

SatDOCK also supports the use of an optional active privacy handset or the fully featured intelligent handset, RST970 these simply and easily added to the SatDOCK.

SatDOCK provides the flexibility of using your handheld satellite telephone to support the use of equipment for a wide variety of applications. It has an in-built Bluetooth module for voice and data connectivity along with an intelligent tracking and alert reporting system utilizing the in-built GPS engine of the SatDOCK. The alert & tracking module can be configured to support periodic polling or emergency alert reporting.



**Heavy Vehicles**



**Cargo Vessel /  
Captain & Crew  
Calling**



**Emergency  
Services**



**Handsfree  
Communication**



**Light Aircraft &  
Helicopter**

## KEY FEATURES & BENEFITS

### ▶ SatDOCK CRADLE

- Securely holds 9555 handset
- Robust design and construction
- Charges 9555 handset ready for use
- Integrated antenna connection
- Integrated USB connectivity

### ▶ HANDSFREE MODE

- In-built echo cancelling
- Full duplex technology
- Superior voice quality

### ▶ TRACKING/GPS

- Tracking & alert monitoring capable
- Periodic position reports or remotely polled
- In-built GPS engine
- Interfaces to Beam's LeoTRAK-Online
- Compatible with other tracking applications

### ▶ PANIC/ALERTS

- Panic alert button in-built to cradle
- Option of additional wired alert buttons

### ▶ INTEGRATED BLUETOOTH

- Supports Bluetooth voice & data accessories

### ▶ IN-BUILT RINGER

- In-built ringer for enhanced ring indication

### ▶ VOICE, DATA, SMS, SBD

- Supports all Iridium voice, data, SMS & SBD services

### ▶ PRIVACY & INTELLIGENT HANDSET

- Supports optional Beam privacy handset and Intelligent Handset
- Auto sensing answer/hang-up intelligence
- Switches between handset and handsfree modes

### ▶ INSTALLATION

- Supports 9 - 32V DC power input
- Flexible installation via universal mount, also suitable for wall mounting
- Antenna, microphone and speaker installed in a convenient location
- Allows semi-permanent installation

### ▶ QUALITY

- 2 year peace of mind with a replacement guarantee
- 100% factory tested
- Full certified, Iridium, RoHS, CE, IEC60945

### ▶ ACCESSORIES

- Privacy handset
- Intelligent handset
- Man down kit
- Mag mount GPS/Iridium antenna

## TRACKING AND ALERT/ALARM

### TRACKING REPORTS:

Tracking messages can be sent from the SatDOCK via the following means;

1. Periodic position reporting, preset during software configuration of the dock
2. Upon an alert being activated via the Alert button on the cradle or connected alert button (external alert loop)
3. A current location position can be sent at any time by pressing the Track button on the front of the SatDOCK

### ALERT/ALARM REPORTS:

Alert/Alarm messages can be activated on the SatDOCK using the two button press on the front of the cradle or alternatively an additional alert button or other trigger can be connected to the unit. Once configured the alert system is always on and will generate an alert message to the preset destination once triggered. Alerts can be triggered to continually send, until the alert is cleared either remotely, or locally on the SatDOCK unit.


## ACCESSORIES

RST970	Intelligent Handset
RST755	Privacy Handset

RST410	Man Down Kit
RST705	Mag mount GPS/Iridium Antenna

# TECHNICAL SPECIFICATIONS

9555SD-G POWER SPECIFICATIONS		
Rated Input	9-32 V DC, 2A max	
Average Power Consumption	Current @ 12V Power Watts	
Standby	68mA	
Transmit + charging	0.7A 8.4W	
Sleep Mode	3mA 35mW	
PHYSICAL SPECIFICATIONS		
	Cradle	Packed
Dimensions - mm	200 x 75 x 65	325 x 140 x 87
Dimensions - inches	7.9 x 3.0 x 2.7	12.8 x 5.5 x 3.4
Weight	0.37 kg (0.7 lbs)	1.1 kg (2.43 lbs)
ENVIRONMENT SPECIFICATIONS		
Operating Temperature	-20 to +70 °C (-4 to +158 °F)	
Charging Temperature	0 to +40 °C (-32 to 104 °F)	
Storage Temperature	-30 to +70 °C (-22 to 158 °F)	
Atmospheric Protection	Conformal Coating to Circuit Board Assy	
EMC Compliance	CE, IEC60945:2002 (Section 9 & 10) 2009/19/EC - Automotive EMC directive	
RoHS	Full compliant RoHS Directive EU 2002/95/EC (All 6 substances)	
WEEE	For EU countries, this product must be collected separately from household waste, as defined in each region. This product must not be discarded together with household waste.	
Flame Retardant	UL94.0	
Safety - SELV	IEC/EN/AS/NZ 60950-1	
GPS MODULE (INTERNAL)		
Receiver Type	14 tracking channels, 51 Acquiring, L1 frequency (1575.42MHz)	
Update rate	1Hz	
Accuracy	Position 2.5mCEP, Velocity 0.1m/s, Timing 300ns	
Acquisition TTFF	Cold 29sec, Hot 1sec	
Sensitivity	-161 dBm	
Operational Limits	Altitude 18000m, Velocity 515m/s	
Dynamics	4G	
Active Antenna Recommendation	Minimum gain 15 - 20dB (to compensate signal loss in RF cable) Maximum noise figure 1.5 dB Maximum gain 50 dB	

INTERFACES	
External Speaker and Microphone	One horizontal 2-pin Microfit connector on the cable loom for speaker and one vertical 2-pin Microfit connector for microphone.
Privacy Handset (Line In/Out)	4-pole 3.5mm audio jack at the bottom of the SatDOCK cradle.
Data Port (USB)	USB Mini-B 5-pin female (USB Slave). USB 2.0 compliant, CDC Serial profile.
Alarm (Alert) Loop1 input, 1 output)	<b>Alarm Mode:</b> "Normally-Closed" Loop IN to OUT Up to 500m cable run / multiple buttons.
Power Cable	4-way Microfit socket. +Vin, OV (GND), and ACC (On/Off Sense). 9-32VDC tolerant. ACC sense: High(1) > +7Vdc Low (0) OV < +5Vdc
Horn Output	Green wire on the cable loom. Open collector output can be interfaced to 12 or 24VDC with up to 120mA current sink capability.
BLUETOOTH® MODULE (INTERNAL)	
System	Bluetooth® 2.0v+EDR (Enhanced Data Rates), 802.11 coexistence.
Profiles	<b>HFP</b> - Hands-Free Profile v.1.5 <b>HFP-AG</b> - Hands-Free Audio Gateway Pro-file v.1.5 & SPP - Serial Port Profile
Power	Default = Class 2 (< 10 metres). Class 1 (<100 metres), +18dBm max. 2.4GHz - 2.4835GHz Unlicensed ISM Band
Antenna	Integrated chip antenna
Regulatory	Bluetooth® identifier: B03005. CE 89/336/EEC - #EC/2006/20013C. FCC part 15 class B: SatDOCK contains Transmitter Module FCC ID: G0QWT11. Canada: Cert# 5123A-BGTWT11E Japan: R201NY, 07215089  
Legal	The Bluetooth® word, mark and logos are owned by the Bluetooth® SIG, Inc. and any use of such marks by Beam Communications is under license. Other trademarks and trade names are those of their respective owners.

APPROVED BEAM RESELLER

Remote Satellite Systems International Inc.  
1455 North Dutton Ave, Suite A  
Santa Rosa, CA 95401  
P: (707) 545-8199  
F: (707) 546-8198  
sales@remotesatellite.com  
www.remotesatellite.com



Remote Satellite Systems  
INTERNATIONAL

[www.beamcommunications.com](http://www.beamcommunications.com)



+61 3 8588 4500



+61 3 9560 9055



info@beamcommunications.com