

IsatPhone^{PRO}

how to install USB drivers

installing the USB drivers

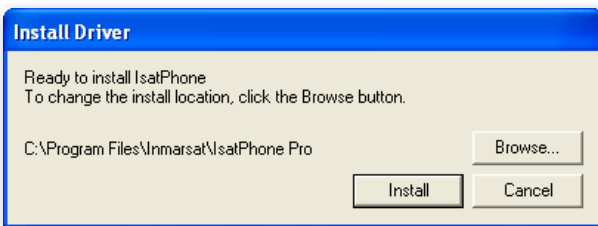
You will need to install the USB drivers on your PC before installing the contact synchronisation and firmware upgrade tools. Installing the USB drivers also reduces your phone's charging time.

To install the USB drivers on your PC, perform the following procedure:

(1) Select **software > USB drivers** from the CD.

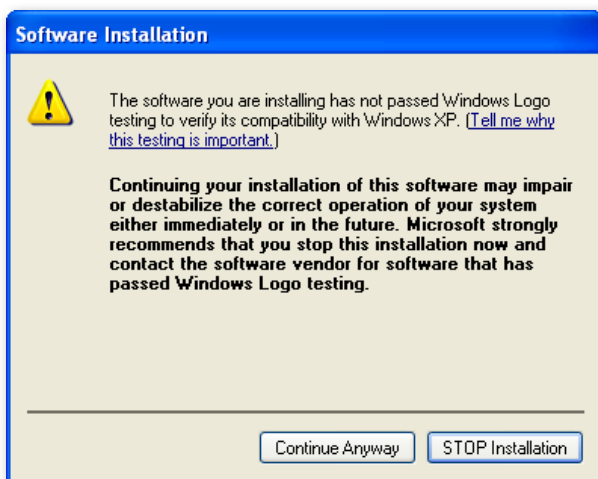


(2) Click **Install**.



The **Software Installation** dialogue box appears.

(3) Click **Continue Anyway**. The **Install Driver** dialogue box appears.

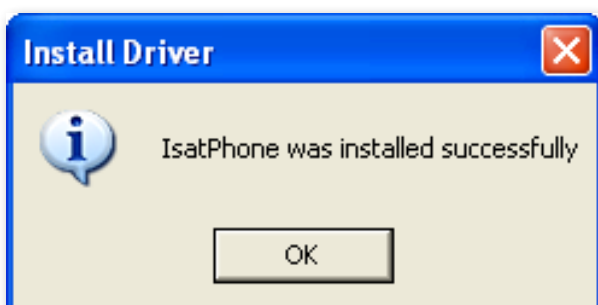


Although the application has not passed Windows Logo testing, it is safe to continue with the installation. Proceed by clicking **Continue Anyway**.

Note: The **Software Installation** dialogue box may appear several times.

Click **Continue Anyway** every time it appears.


(4) Click **OK**.



The drivers are successfully installed.

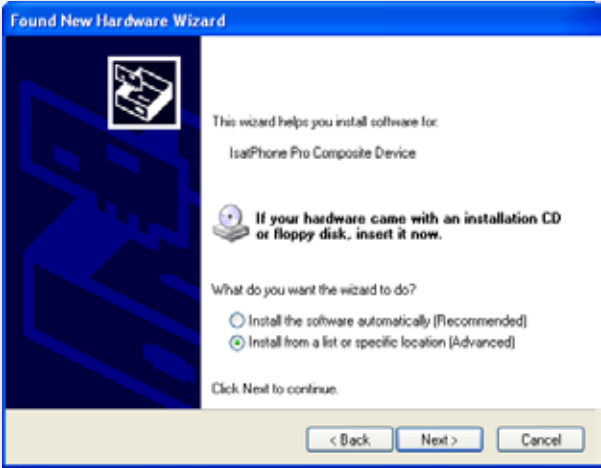
installing the new hardware

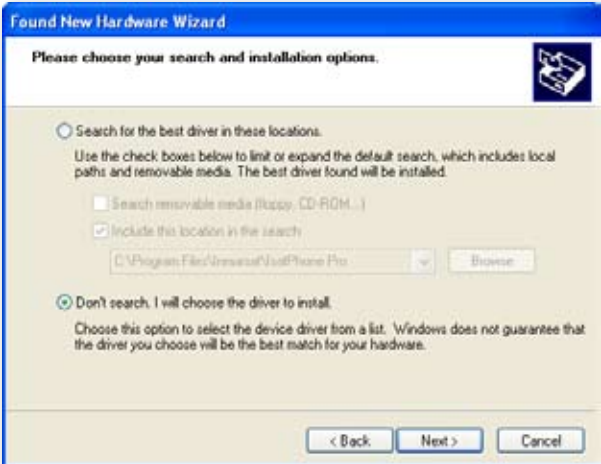
To install the new hardware, perform the following procedure:

- (1) 

Connect your IsatPhone to your PC with the supplied USB cable. If your phone is not switched on, switch it on now.

When the USB cable is connected, the following pop-up will be displayed: 'New hardware found: IsatPhone Pro Composite Device.'

The **Found New Hardware Wizard** appears. Select **No, not this time** and click **Next**.
- (2) 

Select **Install from a list or specific location (Advanced)** and click **Next**.
- (3) 

Select **Don't search. I will choose the driver to install** and click **Next**.

(4)



Click **Next** again.

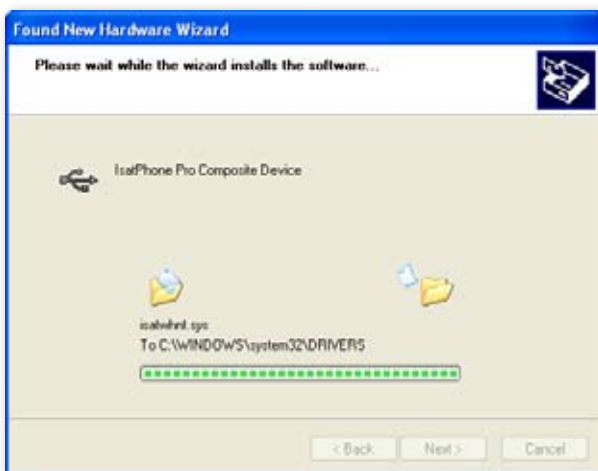
The **Hardware Installation** dialogue box appears.

(5)



Click **Continue Anyway**.

(6)



The **Found New Hardware Wizard** installs the software.

(7)



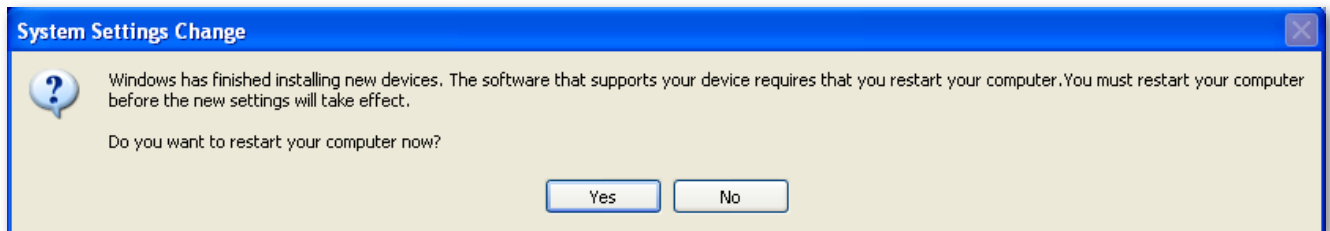
Click **Finish**.

The **System Settings Change** dialogue box appears.

Note: The installation procedure from **Step 1** to **Step 7** is repeated for other IsatPhone applications, eg. the fax modem interface, the contact synchronisation and firmware upgrade tools.

Disconnect the USB cable from your PC and your phone.

(8)



Repeat the instructions from point number (1) as many times as prompted by your PC in order to load each USB driver. On finishing, you may be asked to restart your PC for the changes to take effect. Click **Yes**. Your PC will automatically restart.

inmarsat.com/isatphone



Remote Satellite Systems
1455 N. Dutton Ave., Ste. A, Santa Rosa, CA 95401
(707) 545-8199 www.remotesatellite.com

While the information in this How to Install USB Drivers document has been prepared in good faith, no representation or warranty, express or implied, is made or given as to the adequacy, accuracy, reliability or completeness of such information. Inmarsat Global Limited nor any group company or their respective officers, employees or agents shall have any responsibility or liability to any person resulting from the use of the information in this How to Install USB Drivers document. Copyright © Inmarsat Global Limited 2010. All rights reserved. INMARSAT is a registered trademark of the International Mobile Satellite Organisation; the Inmarsat LOGO is a registered trademark of Inmarsat (IP) Company Limited. Both trademarks are licensed to Inmarsat Global Limited. IsatPhone Pro How to Install USB Drivers June 2010.